

**Cisco Telemetry Broker** includes two pieces of software; a virtual Management node used to manage the Telemetry Broker node(s). The Broker simplifies the consumption of telemetry data for customers' business critical tools by brokering hybrid cloud data, filtering unneeded data, and transforming data to a usable format.

### Benefits:

- Visibility:** Deploy as many nodes as you need to provide visibility to On-Prem (e.g. Netflow, IPFIX, sFlow, syslog) and Cloud (e.g., VPN Flow Logs) Telemetry.
- Reliability:** Ensure Telemetry is getting to the right place, and in the right format. Increases reliability through monitoring and highly available services.
- Simplicity:** Offers simplicity and flexibility with a pre-paid consumption licensing model that lets you pay as you grow.
- Programable:** REST APIs to monitor and manage from other Cisco tools, third-party, or homegrown systems.

### Components:

- Manager node:** The Manager node is a virtual machine that manages Broker nodes. It allows admins to gain visibility into telemetry and how it is shared across consumers.
- Broker node:** The Broker node can be physical or virtual. Broker nodes can be clustered in a high-availability configuration to avoid disruptions on telemetry flows. All broker nodes have at least 2 network interfaces (Management & Telemetry plane).

Cisco Telemetry Broker allows you to ingest network telemetry from many sources, replicate it, and broker that data to multiple sources:

- On-premises network telemetry, including NetFlow, syslog, and IPFIX
- Cloud-based telemetry sources, including AWS

Cisco Telemetry Broker can also detect protocols on ingress including:

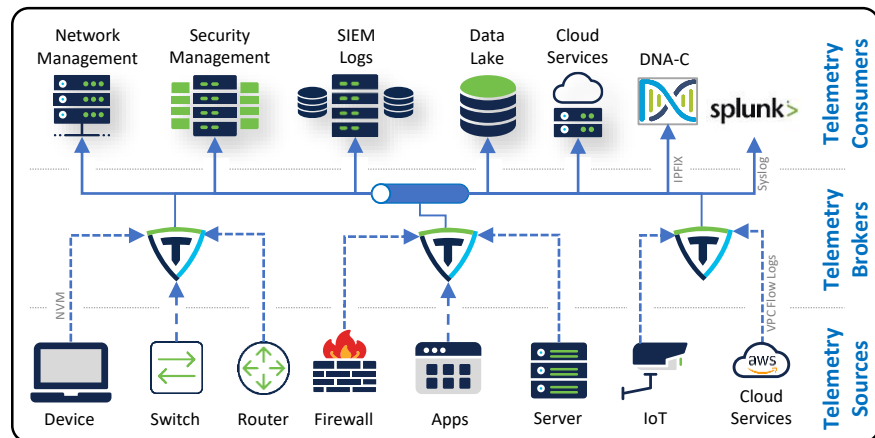
- **IPFIX**
- **NETCONF**
- **Syslog**
- **VPC Flow Log**
- **NetFlow (all versions)**
- **sFlow**
- **SNMP**
- **...and more**

### FAQs:

- Q:** How many manager/broker nodes will be included with the license?  
**A:** Nodes are not licensed. Only the consumption is licensed. Customers are free to deploy 1 node or 1000 nodes.
- Q:** For customers looking to ingest VPC Flow Logs, is there a recommended placement of the broker node that will connect to the S3 buckets?  
**A:** The best connectivity to the S3 bucket is via port 443, wherever that is in the network.

### Features:

- Brokering Data:** The ability to route and replicate telemetry data from a source location to multiple destination consumers.
- Filtering Data:** The ability to filter data that is being replicated to consumers for fine grain control over what consumers can see and analyze. Save money sending data to expensive tools.
- Transforming Data:** The ability to transform data protocols from the exporter to the consumer's protocol of choice.
- Replicate UDP** telemetry to any number of tools.
- Ingest cloud logs** and convert to IPFIX for use in tools like Secure Network Analytics.
- Central management:** Monitor your telemetry pipelines easily from a single UI. Ensure that your consumers are being provided the telemetry chosen. Receive alerts when things don't go quite right.
- High Availability** built in for free.



### Resources:

- [SalesConnect](#)
- [At-a-Glance](#)
- [Docs](#)
- [FAQ](#)
- [Ordering Guide](#)
- [User Guides](#)
- [Licensing](#)
- [Video](#)
- [Data Sheet](#)
- [Architectural Guide](#)
- [Deployment Guide](#)
- [Public page](#)